

NEW RELEASE KEHRER VERLAG

Boris Loder *Particles*

Texts by Hans Fellner, Nathalie Herschdorfer

Designed by Hans Gremmen

Hardcover

24 x 30 cm

56 pages

46 color ill.

English

ISBN 978-3-86828-950-3

Euro 30,00 / GBP 28.00

The city in a cube – found objects tell the story of urban places in Luxembourg

The concept of identity often seems like a container that can be filled with very different, even contradictory contents. With *Particles*, Boris Loder transforms the notion of identity as a container into sculptural photographs. His cubes contain found objects that reflect the character of various sites in Luxembourg in compressed form. In this way, assumptions about urban planning intentions are contrasted with actual use. Fast food on a sports field or a drug stash near a renowned bank allude to socio-geographical realities that only very rarely surface in popular notions of Luxembourg.

2018, *Particles* was exhibited at, among others, the Festival Circulation(s), the Encontros da Imagem, and the Athens Photo Festival.

From the text by **Nathalie Herschdorfer**:

»The work of Boris Loder mirrors the dual definition of 'paysage', the French word for landscape, offered by the dictionary Le Petit Robert: first, as an expanse of land presented by nature to the observer; and second, as the pictorial representation of an area of land in which nature has the leading role, while figures and buildings are mere accessories. Loder's photographs have all been shot in the same geographical location—Luxembourg, the artist's city of residence. They bring together natural elements and various discarded objects. Even though Particles seems to consist of a series of representations of sculptural pieces, each photographed cube in fact denotes a distinct landscape. The titles given to the photographs identify the locations and provide details about their characteristics. In this sense, Boris Loder's work is devoted to specific

places. By representing these environments as photographic images, Boris Loder turns them into landscapes. To qualify as a landscape, a location must be contemplated; it requires a gaze.»

Boris Loder was born in Heidenheim, Germany, on August 28, 1982. He lives and works in Luxembourg. Loder studied German and English literature as well as human and physical geography at the University of Tübingen. His academic education has an impact on his photographic work particularly with regard to his interest in poetic forms of storytelling, image-text relation, and the interrelatedness of human behaviour and urban or natural landscapes.

Boris Loder is a regular contributor to Luxembourg's weekly newspaper d'Lëtzebuerger Land for which he writes photography-related articles such as interviews and reviews. *Particles* is his first book.

borisloder.com

Exhibitions

European Month of Photography, Abbaye de Neumünster, Luxembourg

20.06. – 08.09.2019

Lishui Photography Festival Lishui, China

08.11. – 08.12.2019

Please note: These photographs have been copyright cleared for worldwide print and electronic reproduction in the context of reviews of the books only.

Print media: No more than THREE photographs plus the cover image from the selection can be used in total – they are not to be used on the cover or cropped. Online media may use a total of TEN images in a gallery.

For further details, press images, permissions and review copies, please contact the publisher's press office:

Barbara Karpf, barbara.karpf@kehrerverlag.com or

pr.assistance@kehrerverlag.com

Keherer Verlag, Wieblinger Weg 21, 69123 Heidelberg, Germany

Fon ++49 (0)6221/649 20-25, Fax ++49 (0)6221/64920-20

www.kehrerverlag.com

Press images



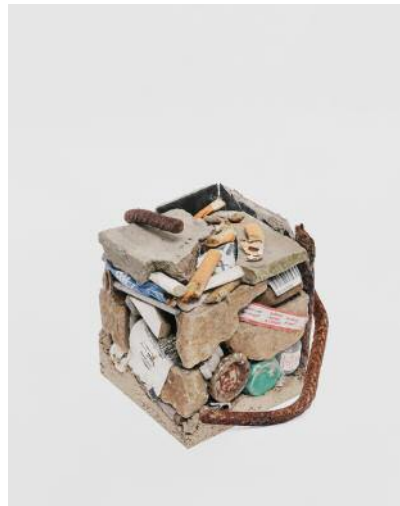
01_Aéroport de Luxembourg
© Boris Loder



02_Eglise Saints Pierre et Paul
© Boris Loder



03_Maternité Grande-Duchesse Charlotte
© Boris Loder



04_Pont Adolphe
© Boris Loder



05_Place des Martyrs
© Boris Loder



06_Sports Ground Campus Geesseknäppchen
© Boris Loder



07_Lycée Technique du Centre
© Boris Loder



08_Abandoned House
© Boris Loder



09_Aéroport de Luxembourg (Landscape)
© Boris Loder



10 Pont Adolphe (Landscape)
© Boris Loder