



NEW PUBLICATION 2023

Jeffrey A. Wolin *Measuring Time* *The Photographs of Jeffrey A. Wolin*

Edited by Sidney and Lois Eskenazi Museum of Art, Indiana University, Bloomington; Mariah R. Keller

Texts by David A. Brenneman, Keith F. Davis, Nanette Esbeck Brewer

Designed by Kehrer Design (Lisa Drechsel)

Hardcover with dust jacket

29 x 24 cm, 192 pages, 31 b/w and 85 color ill.

English

ISBN 978-3-96900-111-0

Euro 44,00 / US\$ 50,00

Retrospective catalog covering Wolin's entire career with key selections from all of his major series

Jeffrey A. Wolin is a celebrated and influential photographic artist and longtime head of Indiana University's photography department. Featuring one hundred works, this retrospective exhibition catalog covers Wolin's entire career with key selections from all ten of his major series, including his earliest landscapes and portraits of stonecutters, Holocaust survivors, war veterans, and people experiencing homelessness. The sum of Wolin's creative achievement will be a surprise and inspiration to nearly every reader. His work is powerful and profoundly humane. Over the years, he has thought deeply about the issues of human history and memory, always attentive to the insights that come from personal storytelling. Best known for his innovative use of image/text combinations, Wolin has explored the living reality of history and the primacy of personal experience. His work is at once formally inventive and deeply empathetic and sympathetic. His pictures provide fresh and powerful insight into the course of time and the complexity of individual lives. Few others, in fact, have explored these issues with anything approaching Wolin's insight, generosity of spirit, and artistic invention. His work expands our sense of both the art of photography and the poignance and integrity of human existence.

From the text *The Photographs of Jeffrey A. Wolin* by **Keith F. Davis**:

Jeffrey A. Wolin's art concerns time and memory. Profoundly human in content, his work is equally humane in spirit: it is infused with an attitude of curiosity, respect, and care. In his half-century of work, Wolin has utilized two basic artistic approaches. The first is a classically purist and formal mode, inspired by the great topographic and documentary photographers of the nineteenth and early twentieth centuries. In these works, Wolin presents clear vi-

sual evidence of things he values. The second approach unites images and texts. Those works create a synthesis of evidence and interpretation, significantly enlarging our understanding of both the camera-made image and the documentary idea.

Jeffrey A. Wolin is Ruth N. Halls Professor Emeritus of Photography at Indiana University. Wolin's photographs have been exhibited in over 100 exhibitions in the US and Europe, including solo shows at the Art Institute of Chicago, International Center of Photography in New York, George Eastman Museum in Rochester, and the Museum of Contemporary Photography in Chicago and group exhibitions at Museum of Modern Art, Whitney Museum, and Los Angeles County Museum of Art. His photographs are in the permanent collections of numerous museums including the Metropolitan Museum of Art, New York; Los Angeles County Museum of Art; San Francisco Museum of Modern Art; Nelson-Atkins Museum of Art, Kansas City; Cleveland Museum of Art; Houston Museum of Fine Arts; Art Institute of Chicago; New York Public Library; George Eastman Museum, Rochester; Whitney Museum of American Art, New York; Bibliothèque Nationale de France, Paris; and Museum of Modern Art, New York. Wolin has published the monographs *Written in Memory: Portraits of the Holocaust*, *Inconvenient Stories: Vietnam War Veterans*, *Pigeon Hill: Then & Now*, *Faces of Homelessness*, among others. He is the recipient of two Visual Artist Fellowships from the National Endowment for the Arts and a Guggenheim Fellowship.

Exhibition

Sidney and Lois Eskenazi Museum of Art,
Indiana University, Bloomington, USA, 07.09. – 17.12.2023

Please note:

These photographs have been copyright cleared for worldwide print and electronic reproduction in the context of reviews of the books only.

They are not to be used on the cover or cropped.

For further details, press images, permissions and review copies, please contact the publisher's press office:

Barbara Karpf, barbara.karpf@kehrerverlag.com or
pr.assistance@kehrerverlag.com

Kehrer Verlag, Mannheimer Str. 175, 69123 Heidelberg, Germany
Phone +49 (0)6221/649 20-18 | Fax +49 (0)6221/64920-20
www.kehrerverlag.com

Press images



01_ Trees on the Beach, Sodus Point, Summer, 1979, from the series Gold-toned Printing-out Paper, 1976–1981 © Jeffrey A. Wolin



02_ Trees on the Beach, Sodus Point, Winter, 1980, from the series Gold-toned Printing-out Paper, 1976–1981 © Jeffrey A. Wolin



03_ Empire State Quarry, Oolitic, 1983, from the series Stone Country, 1981–1985 © Jeffrey A. Wolin



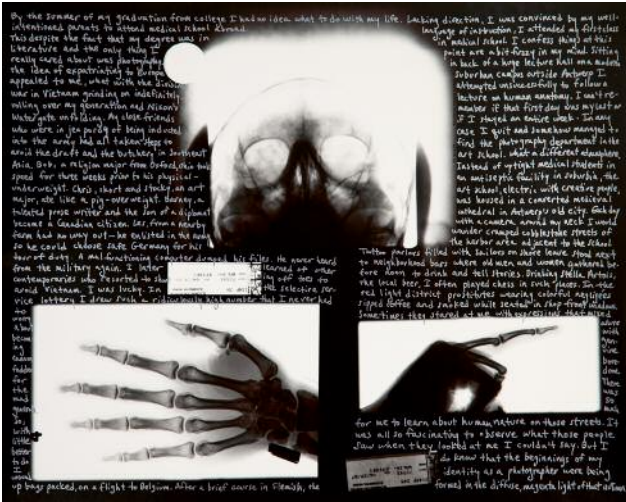
04_ Empire State Building, New York, 1984, from the series Stone Country, 1981–1985 © Jeffrey A. Wolin



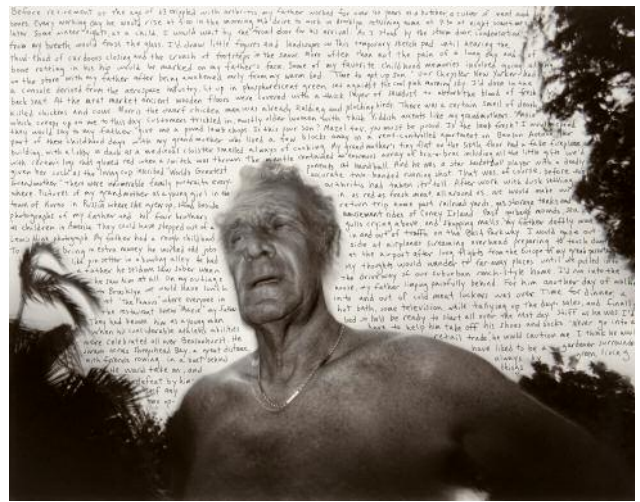
05_ Hotel l'Aréna, Fréjus, 1999, from the series Ancient Provence, 1999–2001 © Jeffrey A. Wolin



06_ Pont du Gard, 1999, from the series Ancient Provence, 1999–2001 © Jeffrey A. Wolin



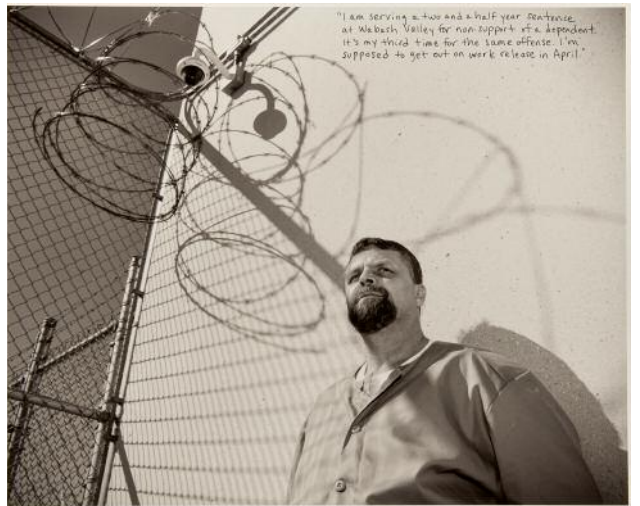
07_Self-portrait with X-ray, 1987, from the series *Autobiography*, 1985–1992
© Jeffrey A. Wolin



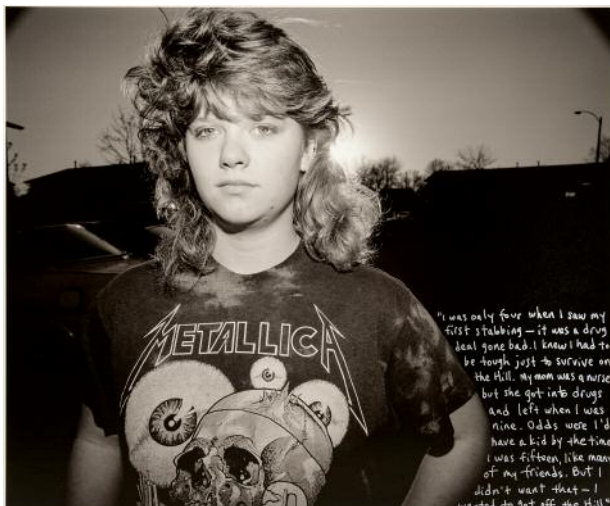
08_ *My Father*, 1985, from the series *Autobiography*, 1985–1992
© Jeffrey A. Wolin



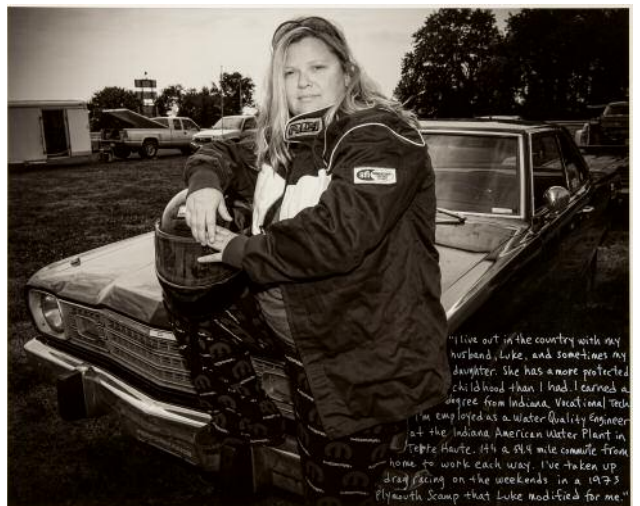
09_Timmy, Pigeon Hill, 1991 (2013), from the series Pigeon Hill: Then & Now, 1987–1991 & 2010–2015 © Jeffrey A. Wolin



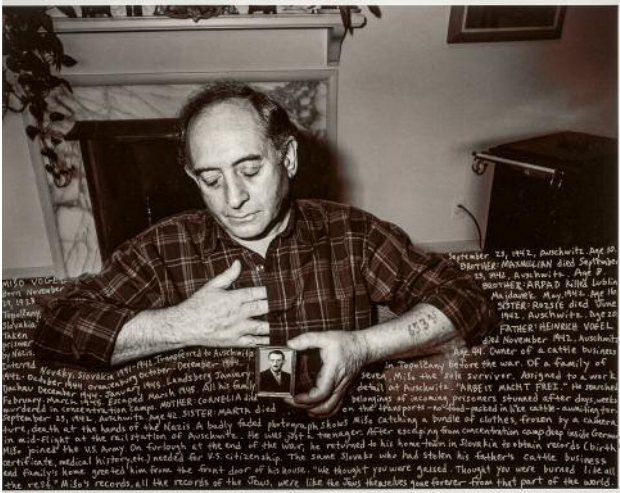
10_Timothy, Wabash Valley Correctional Facility, 2012, from the series Pigeon Hill: Then & Now, 1987–1991 & 2010–2015 © Jeffrey A. Wolin



11_Wendi on Illinois Circle, Pigeon Hill, 1990 (2013), from the series Pigeon Hill: Then & Now, 1987–1991 & 2010–2015 © Jeffrey A. Wolin



11_Wendi at Lyons Raceway, 2013, from the series Pigeon Hill: Then & Now, 1987–1991 & 2010–2015 © Jeffrey A. Wolin



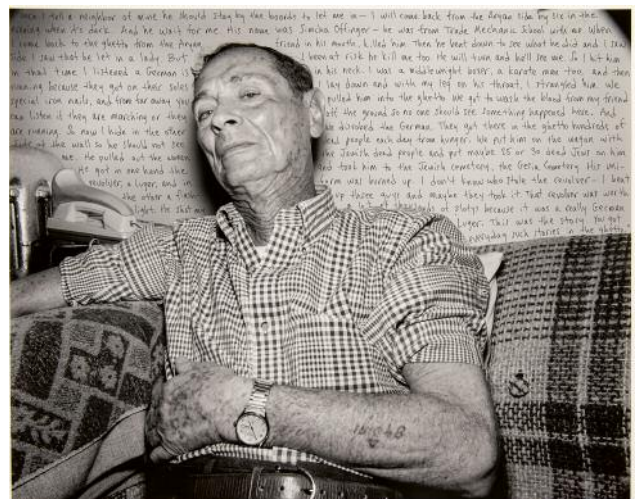
13_Mišo Vogel, born 1923, Topoľčany, Slovakia, from the series Written in Memory: Portraits of the Holocaust, 1988 © Jeffrey A. Wolin



14_Irma Morgensztern, born 1933, Warsaw, Poland, 1993, from the series Written in Memory: Portraits of the Holocaust, 1988 © Jeffrey A. Wolin



15_Rena Grynblat, born 1926, Warsaw, Poland, 1993, from the series Written in Memory: Portraits of the Holocaust, 1988 © Jeffrey A. Wolin



16_Mieczyslaw Weinberg, born 1912, Warsaw, Poland, 1993, from the series Written in Memory: Portraits of the Holocaust, 1988 © Jeffrey A. Wolin



17_Thunderstorm, 1996, from the series Life at the Millennium, 1996–2002 © Jeffrey A. Wolin



18_Sunlight, Provence, 1999, from the series Life at the Millennium, 1996–2002 © Jeffrey A. Wolin



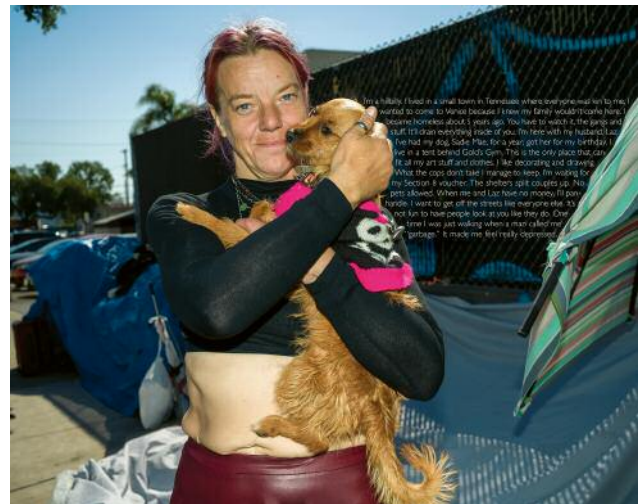
19_ Mark Scully, U.S. Army 1st Lieutenant, Santa Monica, 2005, from the series *From All Sides: Portraits of American & Vietnamese War Veterans*, 2003–2005 & 2007–2010 © Jeffrey A. Wolin



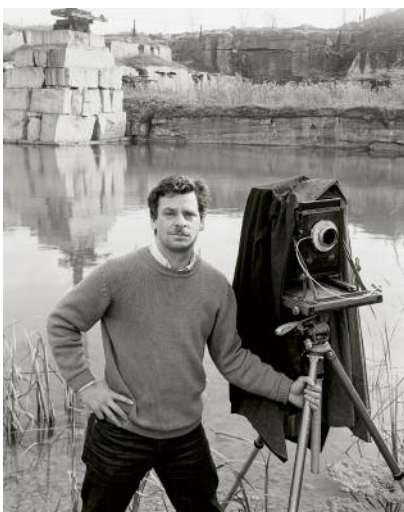
20_ Ho Phuc Ngon, Vietnam People's Army (NVA) Lieutenant Colonel, Da Nang, 2009, from the series *From All Sides: Portraits of American & Vietnamese War Veterans*, 2003–2005 & 2007–2010 © Jeffrey A. Wolin



21_ David B., Venice Beach, 2019, from the series *Faces of Homelessness*, 2018–2021 © Jeffrey A. Wolin



22_ Charlene D., Venice Beach, 2019, from the series *Faces of Homelessness*, 2018–2021 © Jeffrey A. Wolin



23_ Jeffrey Wolin with 8 x 10-inch View Camera, 1984. Photo: Scott Sanders



24_ Jeffrey Wolin with Medium-format Digital Camera, 2016. Photo: Kevin Mooney