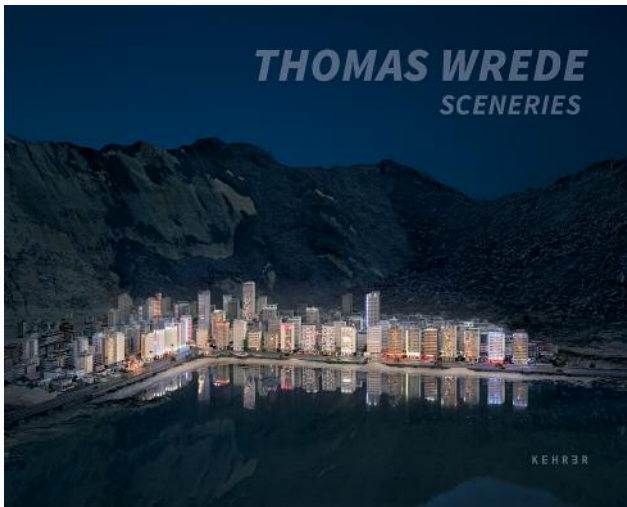


NEW RELEASE KEHRER VERLAG



Thomas Wrede *Sceneries*

Texts by Gerhard Finckh, Günther Kebeck,
Matthias Harder, Klaus Honnef, Isabel Mundry,
Felicitas von Richthofen, Thorsten Sadowsky,
Christoph Schaden, Manfred Schneckenburger,
Josef Spiegel, Thomas Wrede
Designed by Antonia Eggeling
(Beck & Eggeling International Fine Art)
Hardcover, 28 x 22 cm, 128 pages
45 color and 36 duotone ill.
English / German
ISBN 978-3-86828-868-1
Euro 35,00 / GBP 30.00

A comprehensive overview with works from the last 25 years, which question photography's fidelity to reality

The publication *Sceneries* provides comprehensive insight into the diverse and multilayered work of the German photographer Thomas Wrede (b. 1963). It brings together for the first time works from the last 25 years, including well-known series such as *Domestic Landscapes*, which present complex »picture-in-picture« situations in photo wallpapers, and *Die Vögel stehen in der Luft und schreien* (The Birds Hang in the Air and Scream), black-and-white photographs of largely fatal collisions of birds with glass windows.

The starting point of Wrede's photographic oeuvre is always the yearning for nature and the question as to how this can be medially transmitted. With his new works from the series *Real Sceneries*, he explores the boundaries between real and surreal worlds and presents us with an exciting interplay of truth and fiction. In doing so, he consciously shifts these boundaries and questions photography's fidelity to reality.

Thomas Wrede (b. 1963) in Iserlohn (Germany) studied Fine Art in Muenster and Berlin. Since 2015 he teaches photography at the Hochschule der bildenden Künste Essen (HBK). During the last few years numerous exhibitions presented his works in- and outside of Germany. Particularly, the solo exhibitions at the Museum Kunst der Westküste, Alkersum (2010), the Kunsthalle Bielefeld (2010) and at the Wallraf-Richartz-Museum, Cologne (2007) should be mentioned. Since 1998 Wrede has shown his works in several galleries of the United States (New York, San Francisco and Los Angeles). Wrede's photographs are in major art collections: Staats-

galerie Stuttgart, Landesmuseum Muenster, The West Collection Philadelphia, Kunst-am-Bau-projects in Berlin for the German State, UBS Zuerich & Lucerne, DZ-Bank Frankfurt, ING Collection, Amsterdam Hall Art Foundation, New York, Hudson Bay Company, New York.

Also published by Kehrer Verlag



Anywhere
ISBN 978-3-86828-152-1
2010



Die eine Ansicht
ISBN 978-3-86828-776-9
2017

Exhibition

Sceneries
Von der Heydt-Kunsthalle, Wuppertal
27.05. – 26.08.2018

Please note:

These photographs have been copyright cleared for worldwide print and electronic reproduction in the context of reviews of the books only. Print media: No more than THREE photographs plus the cover image from the selection can be used in total – they are not to be used on the cover or cropped. Online media may use a total of TWELVE images in a gallery.

For further details, press images, permissions and review

copies, please contact the publisher's press office:
Sandra Dürdoth, sandra.duerdoth@kehrerverlag.com
Barbara Karpf, barbara.karpf@kehrerverlag.com
Kehrer Verlag, Wieblinger Weg 21, 69123 Heidelberg, Germany
Fon ++49 (0)6221/649 20-25, Fax ++49 (0)6221/64920-20
www.kehrerverlag.com

Press images



1 *Stadt am See*, 2018
© 2018 Thomas Wrede, VG Bild-Kunst, Bonn



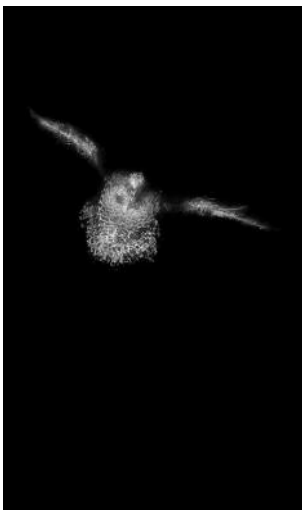
2 *Nach der Flut 1*, 2012
© 2018 Thomas Wrede, VG Bild-Kunst, Bonn



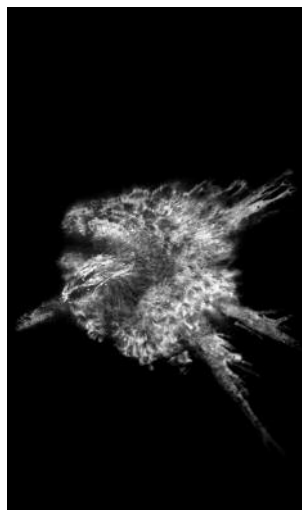
3 *King Kong*, 2006
© 2018 Thomas Wrede, VG Bild-Kunst, Bonn



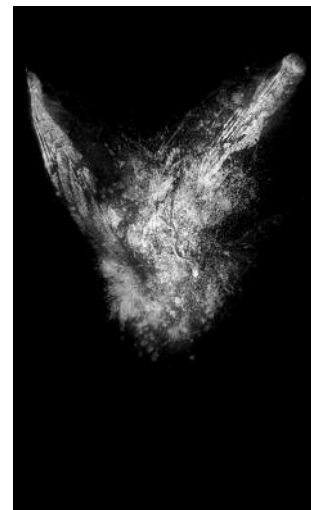
4 *Manhattan*, 2002
© 2018 Thomas Wrede, VG Bild-Kunst, Bonn



5a *Die Vögel stehen in der Luft und schreien Nr. 1*, 1996
© 2018 Thomas Wrede, VG Bild-Kunst, Bonn



5b *Die Vögel stehen in der Luft und schreien Nr. 2*, 1996
© 2018 Thomas Wrede, VG Bild-Kunst, Bonn



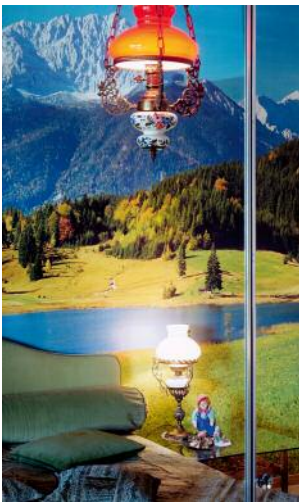
5c *Die Vögel stehen in der Luft und schreien Nr. 5*, 1996
© 2018 Thomas Wrede, VG Bild-Kunst, Bonn



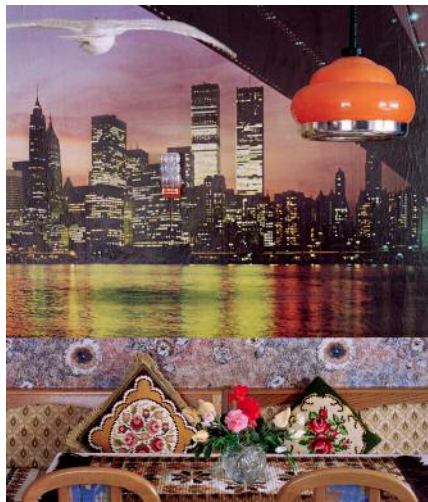
6_ *Tür im Herbstwald*, 2001
© 2018 Thomas Wrede, VG Bild-Kunst, Bonn



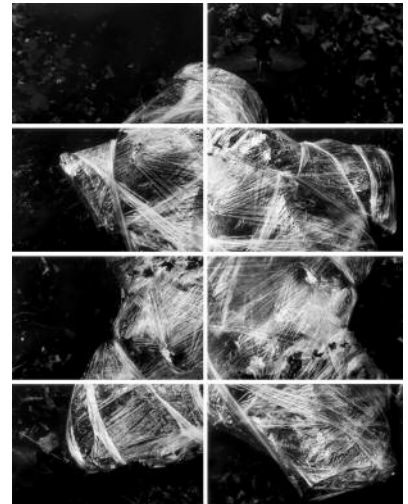
7_ *Tannen*, 2004
© 2018 Thomas Wrede, VG Bild-Kunst, Bonn



8_ *Gebirgslandschaft im Spiegelschrank*, 2000
© 2018 Thomas Wrede, VG Bild-Kunst, Bonn



9_ *Nordseemöwe vor Manhattan*, 2001
© 2018 Thomas Wrede, VG Bild-Kunst, Bonn



10_ *Cadavre Exquis V*, 1994
© 2018 Thomas Wrede, VG Bild-Kunst, Bonn



11_ *Nordamerikanische Felsenlandschaft mit Kakteen, Bottrop-Kirchhellen*, 1997
© 2018 Thomas Wrede, VG Bild-Kunst, Bonn



12_ *O.T.*, 1995, aus der Serie *Samsø*, 1991–1995
© 2018 Thomas Wrede, VG Bild-Kunst, Bonn